

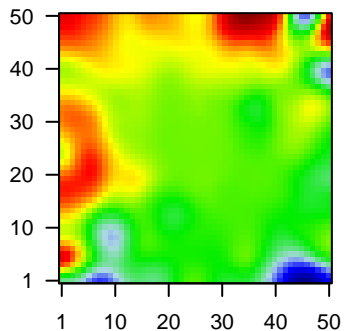
MPI-010

Global Summary

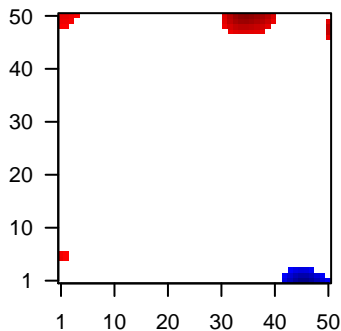
%DE = 0.03
 # genes with fdr < 0.2 = 347 (161 + / 186 -)
 # genes with fdr < 0.1 = 288 (135 + / 153 -)
 # genes with fdr < 0.05 = 221 (97 + / 124 -)
 # genes with fdr < 0.01 = 155 (68 + / 87 -)
 # genes in genesets = 13152

<FC> = 0
 <t-score> = 0.07
 <p-value> = 0.29
 <fdr> = 0.97

Portrait



Regulated Metagenes



Global Genelist

Rank	ID	log(FC)	fdr	p-value	Description
1	AFFX-r2-Hs1	2.28	2e-16	3e-13	49 x 47
2	39318_at	-2.04	2e-16	3e-13	46 x 49 T cell leukemia/lymphoma 1A [Source:HGNC Symbol;Acc:HGNC:7323]
3	41220_at	-1.16	2e-16	3e-13	49 x 19 septin 9 [Source:HGNC Symbol;Acc:HGNC:7323]
4	203509_at	-1.43	2e-16	3e-13	49 x 40 sortilin related receptor 1 [Source:HGNC Symbol;Acc:HGNC:7323]
5	204961_s_at	-1.66	2e-16	3e-13	49 x 39 neutrophil cytosolic factor 1 [Source:HGNC Symbol;Acc:HGNC:7323]
6	205484_at	-1.9	2e-16	3e-13	43 x 44 signaling threshold regulating transmembrane adaptor 1 [Source:HGNC Symbol;Acc:HGNC:7323]
7	208657_s_at	-1.73	2e-16	3e-13	38 x 35 septin 9 [Source:HGNC Symbol;Acc:HGNC:7323]
8	209374_s_at	-1.66	2e-16	3e-13	0 x 22 immunoglobulin heavy constant mu [Source:HGNC Symbol;Acc:HGNC:7323]
9	209995_s_at	-2.94	2e-16	3e-13	46 x 49 T cell leukemia/lymphoma 1A [Source:HGNC Symbol;Acc:HGNC:7323]
10	212827_at	-1.9	2e-16	3e-13	41 x 44 immunoglobulin heavy constant mu [Source:HGNC Symbol;Acc:HGNC:7323]
11	213170_at	-2.08	2e-16	3e-13	49 x 29 glutathione peroxidase 7 [Source:HGNC Symbol;Acc:HGNC:7323]
12	214084_x_at	-1.44	2e-16	3e-13	49 x 19 neutrophil cytosolic factor 1 [Source:HGNC Symbol;Acc:HGNC:7323]
13	219836_at	2.38	2e-16	3e-13	0 x 18 zinc finger BED-type containing 2 [Source:HGNC Symbol;Acc:HGNC:7323]
14	220068_at	-1.46	2e-16	3e-13	49 x 39 V-set pre-B cell surrogate light chain 3 [Source:HGNC Symbol;Acc:HGNC:7323]
15	202274_at	1.92	2e-15	2e-10	0 x 4 actin, gamma 2, smooth muscle, enteric [Source:HGNC Symbol;Acc:HGNC:7323]
16	39729_at	-1.07	1e-14	3e-10	49 x 49 peroxiredoxin 2 [Source:HGNC Symbol;Acc:HGNC:9353]
17	206150_at	-1.13	2e-14	4e-10	49 x 38 CD27 molecule [Source:HGNC Symbol;Acc:HGNC:11922]
18	212560_at	-1.25	4e-14	6e-10	49 x 40 sortilin related receptor 1 [Source:HGNC Symbol;Acc:HGNC:7323]
19	211656_x_at	-0.99	8e-14	6e-10	2 x 9 major histocompatibility complex, class II, DQ beta 1 [Source:HGNC Symbol;Acc:HGNC:7323]
20	203186_s_at	-1.06	9e-14	2e-09	0 x 3 S100 calcium binding protein A4 [Source:HGNC Symbol;Acc:HGNC:7323]

Global Geneset Analysis

Rank	GSZ	p-value	#all	Geneset
<i>Overexpressed</i>				
1	15.89	NULL	7635	Chromatin remodeling peripheral blood_1_TssA
2	15.27	NULL	8200	Chromatin remodeling peripheral blood_2_TssAFInk
3	14.98	NULL	7833	Chromatin remodeling peripheral blood_1_TssA
4	14.85	NULL	7751	Chromatin remodeling killer cells peripheral blood_1_TssA
5	14.66	NULL	7420	Chromatin remodeling peripheral blood_1_TssA
6	14.13	NULL	8245	Chromatin remodeling regulatory cells peripheral blood_2_TssAFInk
7	13.76	NULL	7930	Chromatin remodeling regulatory cells peripheral blood_1_TssA
8	13.73	NULL	8406	Chromatin remodeling peripheral blood_2_TssAFInk
9	13.7	NULL	7957	Chromatin remodeling peripheral blood_2_TssAFInk
10	13.66	NULL	7225	Chromatin remodeling fetal_midbrain_ReprPC
11	13.23	NULL	5529	Lymphoid tissue development
12	13.16	NULL	8068	Chromatin remodeling cells peripheral blood_1_TssA
13	13.11	NULL	8275	Chromatin remodeling Fibroblasts
14	13.06	NULL	8766	Chromatin remodeling Melanocytes
15	12.95	NULL	8322	Chromatin remodeling naive cells peripheral blood_1_TssA
16	12.87	NULL	8370	Chromatin remodeling killer cells peripheral blood_2_TssAFInk
17	12.42	NULL	6997	Chromatin remodeling fetal_midbrain_K9K27me3
18	12.23	NULL	8431	Chromatin remodeling naive cells peripheral blood_2_TssAFInk
19	12.17	NULL	5716	Chromatin remodeling peripheral blood_4_Tx
20	12.06	NULL	6099	Chromatin remodeling Tx
<i>Underexpressed</i>				
1	-11.57	NULL	2765	Chromatin remodeling regulatory cells peripheral blood_13_ReprPC
2	-11.41	NULL	3734	Chromatin remodeling peripheral blood_13_ReprPC
3	-11.21	NULL	3001	Chromatin remodeling peripheral blood_14_ReprPCWk
4	-11.14	NULL	2747	Chromatin remodeling peripheral blood_12_EnhBiv
5	-11.1	NULL	3724	Chromatin remodeling peripheral blood_12_EnhBiv
6	-11.05	NULL	3918	Chromatin remodeling peripheral blood_14_ReprPCWk
7	-10.79	NULL	2375	Chromatin remodeling ReprPC_Fibroblasts
8	-10.72	NULL	3168	Lymphoid tissue development
9	-10.54	NULL	2405	Chromatin remodeling peripheral blood_13_ReprPC
10	-10.53	NULL	2154	Chromatin remodeling regulatory cells peripheral blood_11_BivFInk
11	-10.42	NULL	1984	Chromatin remodeling ReprPC_Melanocytes
12	-10.38	NULL	3150	Chromatin remodeling myocytes peripheral blood_13_ReprPC
13	-10.27	NULL	1611	CC extracellular region
14	-10.21	NULL	3089	Chromatin remodeling regulatory cells peripheral blood_14_ReprPCWk
15	-10	NULL	2602	Chromatin remodeling killer cells peripheral blood_12_EnhBiv
16	-9.97	NULL	2374	Chromatin remodeling ReprPCWk_Fibroblasts
17	-9.91	NULL	2867	Chromatin remodeling ReprPCWk_MSC_Adipocyte
18	-9.88	NULL	2417	Chromatin remodeling ReprPCWk_Melanocytes
19	-9.8	NULL	2148	Chromatin remodeling ReprPC_Skeletal_Muscle
20	-9.8	NULL	2254	Chromatin remodeling ReprPC_MSC_Adipocyte

p-values

